

3-IN-1 HUMIDIFIER

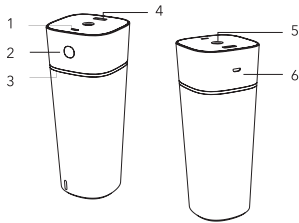
8082150

Instruction Manual

INCLUDED

- 3-in-1 humidifier
- Fan attachment
- LED light attachment
- Micro USB cable
- 6 filters
- Instruction manual

COMPONENT IDENTIFICATION



1. LED indicator
2. ON/OFF button
3. Night light
4. USB output
5. Spray nozzle
6. Micro USB port input

FEATURES

- Micro USB port
- USB port
- Nano spray technology
- Continuous and intermittent spray modes
- Night light

PRODUCT OVERVIEW

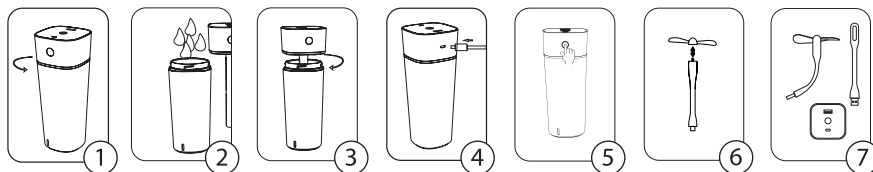
This USB-powered 3-in-1 humidifier provides a soothing, cool mist that relieves dry skin and congestion by adding moisture to the air. Nano spray technology effectively reduces dryness, electronic radiation, and static electricity. Choose from continuous or intermittent modes. Safe and clean, and suitable for indoor and car use. Also functions as a night light.

GETTING STARTED

OPERATING INSTRUCTIONS

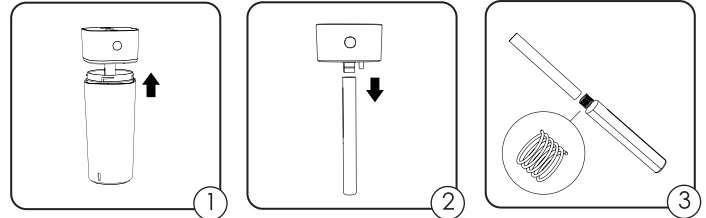
1. Remove the lid (see Fig. 1).
2. Add water to the bottle (see Fig. 2).
3. Replace the lid (see Fig. 3) and plug in the micro USB cable (included) (see Fig. 4). Plug the cable into a wall adapter or other USB power source (not included).
4. Press the function button once for a continuous spray mode. Press the function button twice for an intermittent spray mode (sprays for three seconds, pauses for three seconds). Press the function button three times to turn the spray OFF. (see Fig. 5)
5. The USB port on the back of the lid can be used as a charging port. Insert the fan (see Fig. 6)/LED light included, or use to charge a USB device. (see Fig. 7)

NOTE: The humidifier will automatically turn OFF when the water level is low.



CHANGING THE FILTER

1. Turn plastic cover counterclockwise to remove (see Fig. 1).
2. Pull out the plastic tube and remove the cotton stick (see Fig. 2) being careful of the small spring inside the tube.
3. Reinsert the spring first (if required), then insert a new cotton stick (see Fig. 3).
4. Replace the plastic cover by securely turning clockwise.



SPECIFICATIONS

Operating Voltage:	DC 5V/1A
Operating Current:	400mA
Operating Power:	2W
Water Tank Volume:	240mL
Spray Volume:	Approximately 35mL/H
Timer of Continuous Spray:	4 hours
Timer of Intermittent Spray:	8 hours
Dimensions:	64.5 x 64.5 x 162 mm
Materials:	ABS/PP/Silicone/Electrical components
Weight:	170g

CAUTIONS

- **DO NOT** run humidification function with low water level—please add water before switching ON
- **DO NOT** use with essential oils
- **DO NOT** submerge in water
- Wipe clean with a soft rag
- Adult supervision for children under 10 years old



THE SOURCE - WARRANTY

The Source warrants that this product will be free from defects in materials and workmanship for a period of 6 months from the date of purchase. Within this period, simply take the product and your proof of purchase to any The Source store or participating dealer and the product will be replaced (where available) without charge. Any product which has been subject to misuse or accidental damage is excluded from this warranty. This warranty is only applicable to a product purchased through The Source company-owned stores or participating dealers in Canada where the warranty is included with the product. While this warranty does not confer any legal rights other than those set out above, you may have additional statutory rights which will vary under the laws of the various countries, states, provinces and other governmental entities in which The Source operates. This warranty is subject to all statutory rights you may have in Canada.

Imported by:
The Source, Barrie, Ontario, Canada, L4M 4W5
Manufactured in China
© 2019 The Source All rights reserved.
www.thesource.ca

