

**INSTRUCTION MANUAL—**

**8078359**

Please read this manual carefully and retain for future reference.

**INCLUDED**

- 2.4GHz wireless keyboard
- 2 AAA batteries and 1 AA battery
- Wireless mouse
- Nano receiver
- Instruction manual

**FEATURES**

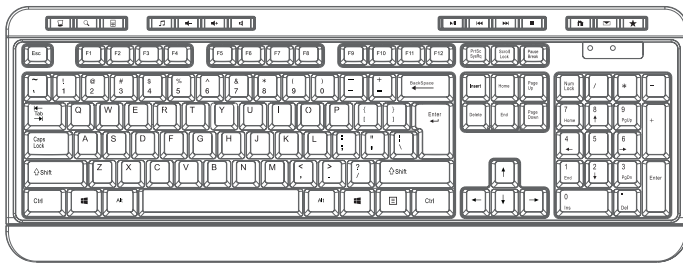
**KEYBOARD**

- Adjustable legs
- Low profile, whisper-quiet keys
- Full-size, ergonomic design

**MOUSE**

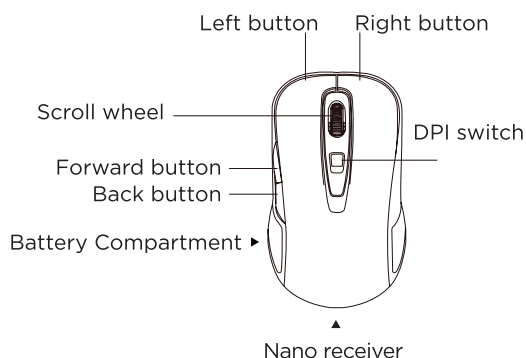
- Adjustable DPI for smooth, precise tracking
- Auto-sleep function to preserve battery life
- Up to 8m range
- Ergonomic design suitable for left or right-handed use

**COMPONENT IDENTIFICATION**  
**KEYBOARD**



- |                      |                   |
|----------------------|-------------------|
| My Computer          | Play/Pause        |
| Search               | Previous          |
| Calculator           | Next              |
| Windows Media Player | Stop              |
| Volume down          | Home Page         |
| Volume up            | Mailbox (default) |
| Mute                 | Favourites        |

**MOUSE**



**GETTING STARTED**

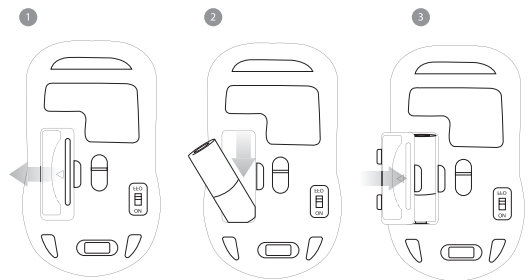
**INSTALLING THE BATTERIES—KEYBOARD**

1. Open the battery compartment on the back of the keyboard.
2. Insert 2 AAA batteries (included) following the polarity (+/-) marked.
3. Close the battery compartment.
4. The LED will be red when the power is ON.



**INSTALLING THE BATTERY—MOUSE**

1. Open the battery compartment on the bottom of the mouse.
2. Insert 1 AA battery (included) following the polarity (+/-) marked.
3. Close the battery compartment.

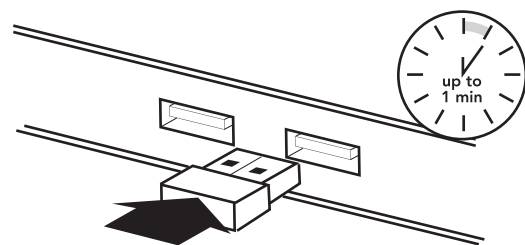


**OPERATING INSTRUCTIONS**

1. Turn your computer ON.
2. Remove the nano receiver from the back of the mouse and plug it into your computer's USB port.
3. Drivers will be installed automatically.

**NOTE:**

- On some surfaces, the use of a mouse pad may be necessary



**FUNCTIONAL ZONE**

Press the NUM LOCK button to switch to functional zone for the following features:

- |     |           |
|-----|-----------|
| 2=  | ▼         |
| 4=  | ◀         |
| 6=  | ▶         |
| 8=  | ▲         |
| 1=  | End       |
| 3=  | Page Down |
| 7=  | Home      |
| 9=  | Page up   |
| 0=  | Insert    |
| . = | Delete    |

## MOUSE

- 3 levels of DPI: 800/1200/1600
- Default is set to 1200, pressing the DPI button will cycle through the levels. The cycle is 1200/1600/800

## LOW POWER INDICATOR

When the keyboard power is low, the LED indicator will flash red.

## TROUBLESHOOTING

If you are experiencing connection issues please follow the steps below:

- Ensure that the receiver is inserted correctly and that both the keyboard and mouse are turned ON. Press ESC+K to reconnect
- Ensure both the keyboard and mouse are within the 8m range and that there are no large metal devices nearby—microwaves, televisions or stoves—that may interfere with reception
- Remove and reinstall the batteries
- Ensure you are not working on a metal surface, which may reduce performance
- Replace the batteries

## SPECIFICATIONS

Adjustable DPI:	800/1200/1600 Optical
Frequency:	2.4GHz
Range	Up to 8m
Multimedia keys:	14 one-touch (for Windows only)
Supports:	Windows 7/8/10 Mac OS X 10.10 or above

## NOTE ON HANDLING BATTERIES

- Keep batteries out of the reach of children
- Replace old or weak batteries promptly
- **DO NOT** mix old and new batteries or use different types of batteries
- Dispose of and recycle old batteries in accordance with local regulations

## Industry Canada Notice RSS210

This device complies with Industry Canada license-exempt RSS standard(s).

Operation is subject to the following two conditions:

- (1) this device may not cause interference, and
- (2) this device must accept any interference, including interference that may cause undesired operation of the device.

This digital apparatus does not exceed the Class B limits for radio noise emissions from digital apparatus set out in the Radio Interference Regulations of Industry Canada.

**IC Number:** Keyboard 255A-8078358  
Mouse 255A-8078359



## THE SOURCE - WARRANTY

The Source warrants that this product will be free from defects in materials and workmanship for a period of 12 months from the date of purchase. Within this period, simply take the product and your proof of purchase to any The Source store or participating dealer and the product will be replaced (where available) without charge. Any product which has been subject to misuse or accidental damage is excluded from this warranty.

This warranty is only applicable to a product purchased through The Source company-owned stores or participating dealers in Canada where the warranty is included with the product. While this warranty does not confer any legal rights other than those set out above, you may have additional statutory rights which will vary under the laws of the various countries, states, provinces and other governmental entities in which The Source operates. This warranty is subject to all statutory rights you may have in Canada.

Imported by:  
The Source, Barrie, Ontario, Canada, L4M 4W5  
Manufactured in China  
© 2018 The Source All rights reserved.  
www.thesource.ca

