

XG XTREME
GAMING

FOR
PC/MAC **XG**



GK-358

LUMEN

Light-Up Gaming Keyboard

8073658

XTREME GAMING

Xtreme Gaming offers a great selection of innovative products for avid gamers. From mice, keyboards, headsets and accessories, Xtreme Gaming has the gear you need to help you “get in the game”.

Xtreme Gaming products stand up to the rigours of long gaming sessions. Customize your playing advantage with modern designs and enhanced features, like custom macros or colourful LED lighting for a fun and unique style.

Get your PC primed and ready for action—and personalize your style—with features to give you an edge.

CUSTOMIZE YOUR GAMING PC OR CONSOLE

Customize your gaming PC or console.

Make your gaming experience truly personal with Xtreme Gaming. Many items feature cool multi-colour lighting options.

ACCESSORIES TO ENHANCE YOUR GAMING EXPERIENCE

Xtreme Gaming has everything you need to complete your gaming PC or console and take your gaming to the next level.

PACKAGE CONTENTS:

- GK-358 Wired Gaming Keyboard
- Quick Guide
- CD

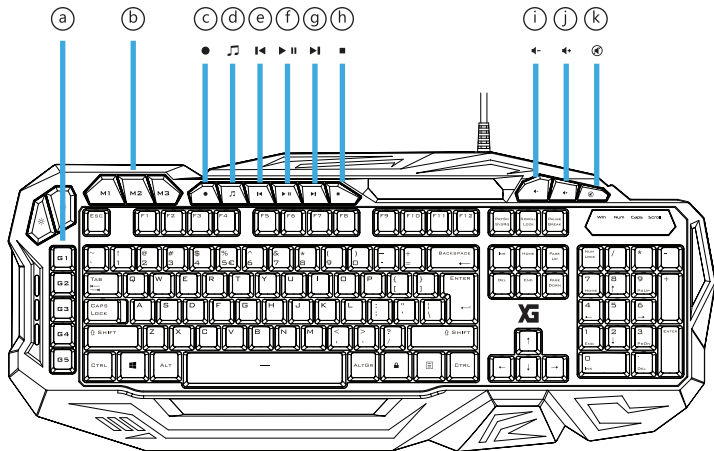
SYSTEM REQUIREMENTS

- Supports Windows 7/8/8.1/10

FEATURES:

- 5 programmable backlit macro; 3 custom profile keys
- Anti-Ghosting: Up to 19 simultaneous key pressings
- Game mode switch: directly disable Windows & Menu key
- CD software for programming keys & macro
- Two separate LED switching key: adjust LED colour and brightness
- Nine separate multimedia keys
- Palm rest and adjustable feet for typing or gaming; tilt design of keycap
- Dedicated slot for holding mobile phone
- Supports Windows 7/8/8.1/10


FEATURES:



FEATURES:

- a Macro keys
- b Profile buttons
- c Record macro
- d Music player
- e Previous track
- f Play/pause
- g Next track
- h Stop
- i Volume down
- j Volume up
- k Mute





SPECIAL KEYS


*	LED Brightness	⚙️	LED Colour
•	Macro record**	🎵	Open music player
⏮	Previous track	▶️	Play/pause
⏭	Next track	■	Stop
⏪	Decrease volume	⏩	Increase volume
🔇	Mute		Macro keys

**To record a macro

- Press record
- Press the desired macro key
- Record the desired keyboard sequence
- Press record again to stop recording

LED INDICATORS

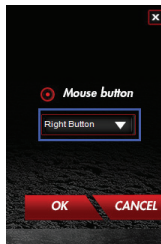
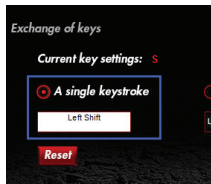
Win 	Disable Windows key and menu key	Num 	NUM lock
Caps 	Caps lock	Scroll 	Scroll lock

Press the Game lock button  to enable/disable Windows key and menu key while playing

BUTTON PROGRAMMING

Assign a function

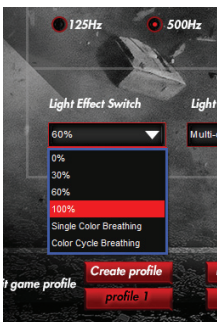
- Click on the button that you want to re-assign
- Choose between a single keystroke or mouse button
- Click on the mouse key function to open a menu
- Click on Apply to save changes



LIGHT SETTINGS

Change the LED light

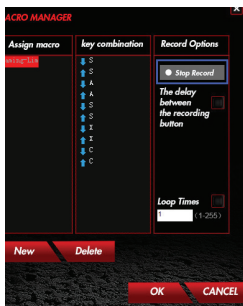
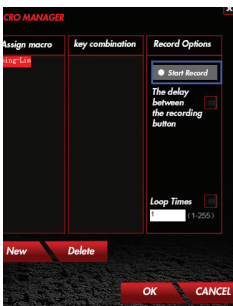
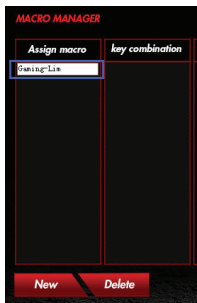
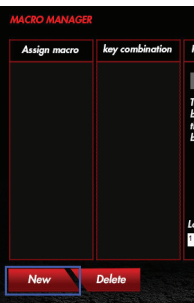
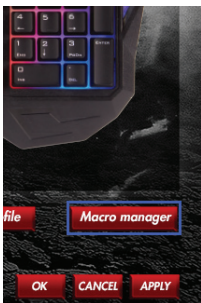
- Click on the Advanced Settings button
- Change the brightness of the light or change to breathing
- Select the desired LED colour
- Click on Apply to save changes



MACRO SETTINGS (CUSTOMIZED PROGRAMS G1-G5)

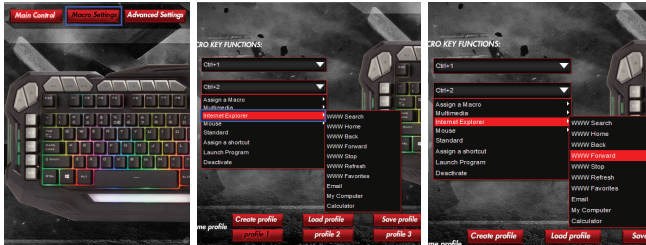
Create a macro (Store a sequence of keys in the software)

- Click on the Macro manager button
- Create a new macro by clicking on New
- Enter the name of the new macro and hit Enter on your keyboard
- Click on the Start Record button to start recording the preferred keyboard sequence
- When you're finished creating your macro, click the Stop record button
- Click on OK to save



ASSIGN A MACRO

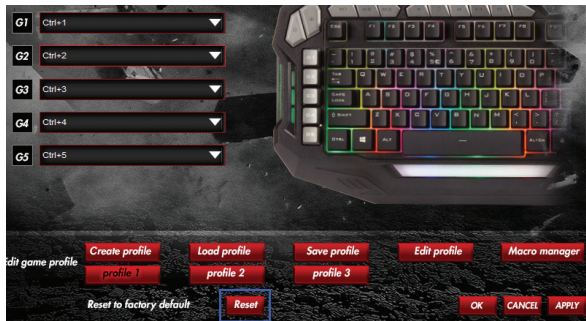
- Click on the Macro Settings button
- Hover over the function to open the side menu
- Click on the created macro in the Assign a Macro menu to assign the macro to a Macro key
- Click on Apply to save the changes



RESET

Reset the profiles

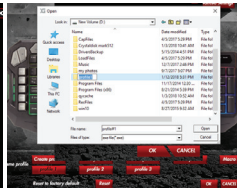
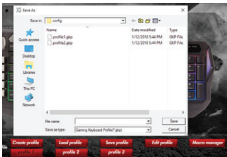
- Click Reset to reset all the profiles



PROFILE SETTINGS

Create, save or load a profile

- Click on Create Profile
- Enter a name for the profile
- Link the profile to activate the profile automatically
- Select your favourite application
- Click on Save Profile to save



ADVANCED SETTINGS

- Gaming Mode

ON: Disable Windows key & menu key in gaming.

OFF: Activate Windows key & menu key in gaming.

- ECO Mode

LED goes OFF after 5 minutes of inactivity.

TROUBLE SHOOTING

Windows key does not work: Press the lock button to unlock the Windows key.

The macro keys do not work: Press the correct profile key to activate the correct profile.

The FCC Wants You to Know

This equipment has been tested and found to comply with the limits for a Class B digital device, pursuant to Part 15 of the FCC Rules. These limits are designed to provide reasonable protection against harmful interference in a residential installation.

This equipment generates, uses and can radiate radio frequency energy and, if not installed and used in accordance with the instructions, may cause harmful interference to radio communications. However, there is no guarantee that interference will not occur in a particular installation.

If this equipment does cause harmful interference to radio or television reception, which can be determined by turning the equipment off and on, the user is encouraged to try to correct the interference by one or more of the following measures:

- Reorient or relocate the receiving antenna.
- Increase the separation between the equipment and receiver.
- Connect the equipment into an outlet on a circuit different from that to which the receiver is connected.
- Consult the dealer or an experienced radio/TV technician for additional suggestions.

Any changes or modifications not expressly approved by the party responsible for compliance could void the user's authority to operate the equipment. Where shielded interface cables have been provided with the product or specified additional components or accessories elsewhere defined to be used with the installation of the product, they must be used in order to ensure compliance with FCC regulation.

CAN ICES-3(B)/NMB-3(B)

THE SOURCE – WARRANTY



The Source warrants that this product will be free from defects in materials and workmanship for a period of one (1) year from the date of purchase. Within this period, simply take the product and your proof of purchase to any The Source store or participating dealer and the product will be replaced (where available) without charge. Any product which has been subject to misuse or accidental damage is excluded from this warranty.

This warranty is only applicable to a product purchased through The Source company-owned stores or participating dealers in Canada where the warranty is included with the product. While this warranty does not confer any legal rights other than those set out above, you may have additional statutory rights which will vary under the laws of the various countries, states, provinces and other governmental entities in which The Source operates. This warranty is subject to all statutory rights you may have in Canada.

Imported by:
The Source,
Barrie, Ontario, Canada, L4M 4W5

Manufactured in China

www.thesource.ca

© 2018 The Source
All rights reserved.



Please Recycle

