



Heated Foot Massager



User Guide

SMG1501

Sharper Image® name and logo are registered trademarks. Manufactured and marketed by Southern Telecom under license. © Sharper Image. All Rights Reserved.



Before Using... Limited Warranty

PLEASE READ THESE INSTRUCTIONS AND SAVE FOR FUTURE REFERENCE

This product is not intended for medical use. It is intended only to provide a massage.

Please consult your doctor prior to using this product, if

- You are pregnant
- You have a pacemaker
- You have any concerns regarding your health

General Warnings

- Never leave the appliance unattended, especially if children are present.
- Not recommended for children under the age of 12 years old.
- Disconnect from power source when not in use.
- Never cover the appliance when it is in operation.
- Do not use this product for more than 15 minutes at a time.
- Extended use of product can lead to the product's excessive heating and may cause damage to the product and/or its surroundings or bodily harm. Should this occur, discontinue use and allow the unit to cool before operating.
- Do not massage an area where there is already pain or persisting pain.
- DO NOT use this product as a substitute for medical attention.
- DO NOT use this product before bed. The massage has a stimulating effect and can delay sleep.
- NEVER use this product while in bed.
- This product should NEVER be used by any individual suffering from any physical ailment that would limit the user's capacity to operate the controls or who has sensory deficiencies in the lower half of their body.

90 Days Limited Warranty

In the unlikely event that this product is defective, or does not perform properly, you may within ninety (90) days from your original date of purchase return it to the authorized service center for repair or exchange.

TO OBTAIN WARRANTY SERVICE:

- Call the Customer Support number located below, or go to our website portal to receive an SRO number.
- Provide proof of the date of purchase within the package (dated bill of sale).
- Prepay all shipping costs to the authorized service center, and remember to insure your return.
- Include a return shipping address (no P.O. Boxes), a telephone contact number, and the defective unit within the package.
- Describe the defect or reason you are returning the product.

Your product will be repaired or replaced, at our option, for the same or similar model of equal value if examination by the service center determines this product is defective. Products received damaged as a result of shipping will require you to file a claim with the carrier.

The shipping address of the authorized service center is:
 Southern Telecom, Inc.
 Attention: Customer Service (2nd Floor)
 14-C 53rd Street
 Brooklyn, NY 11232

Should you have any questions or problems concerning this product, please contact our customer service department at:

Customer Support:
 Phone: 1-877-768-8481
 Monday-Friday 8AM-10PM(EST)

www.southern telecom.com
 Click on "Product Support"

Warranty service not provided

This warranty does not cover damage resulting from accident, misuse, abuse, improper installation or operation, lack of reasonable care, and unauthorized modification. This warranty is voided in the event any unauthorized person opens, alters or repairs this product. All products being returned to the authorized service center for repair must be suitably packaged.

Limitation of Warranty:

SOUTHERN TELECOM SHALL NOT BE LIABLE FOR INCIDENTAL OR CONSEQUENTIAL DAMAGES RESULTING FROM THE USE OF THIS PRODUCT
 • THE WARRANTY STATED ABOVE IS THE ONLY WARRANTY APPLICABLE TO THIS PRODUCT. ALL OTHER WARRANTIES, EXPRESS OR IMPLIED (INCLUDING ALL IMPLIED WARRANTIES OF MERCHANTABILITY OR FITNESS FOR A PARTICULAR PURPOSE) ARE HEREBY DISCLAIMED. NO VERBAL OR WRITTEN INFORMATION GIVEN BY AIT, INC. ITS AGENTS, OR EMPLOYEES SHALL CREATE A GUARANTY OR IN ANY WAY INCREASE THE SCOPE OF THIS WARRANTY.
 • REPAIR OR REPLACEMENT AS PROVIDED UNDER THIS WARRANTY IS THE EXCLUSIVE REMEDY OF THE CONSUMER. AIT, INC. SHALL NOT BE LIABLE FOR INCIDENTAL OR CONSEQUENTIAL DAMAGES RESULTING FROM THE USE OF THIS PRODUCT OR ARISING OUT OF ANY BREACH OF ANY EXPRESS OR IMPLIED WARRANTY ON THIS PRODUCT. THIS DISCLAIMER OF WARRANTIES AND LIMITED WARRANTY ARE GOVERNED BY THE LAWS OF THE STATE OF NEW YORK. EXCEPT TO THE EXTENT PROHIBITED BY APPLICABLE LAW, ANY IMPLIED WARRANTY OF MERCHANTABILITY OR FITNESS FOR A PARTICULAR PURPOSE ON THIS PRODUCT IS LIMITED TO THE APPLICABLE WARRANTY PERIOD SET FORTH ABOVE.

Some states do not allow the exclusion nor limitation of incidental or consequential damages, or limitations on how long an implied warranty lasts so the above limitations on exclusions may not apply to you. This warranty gives you specific legal rights, and you also may have other rights that vary from state to state.

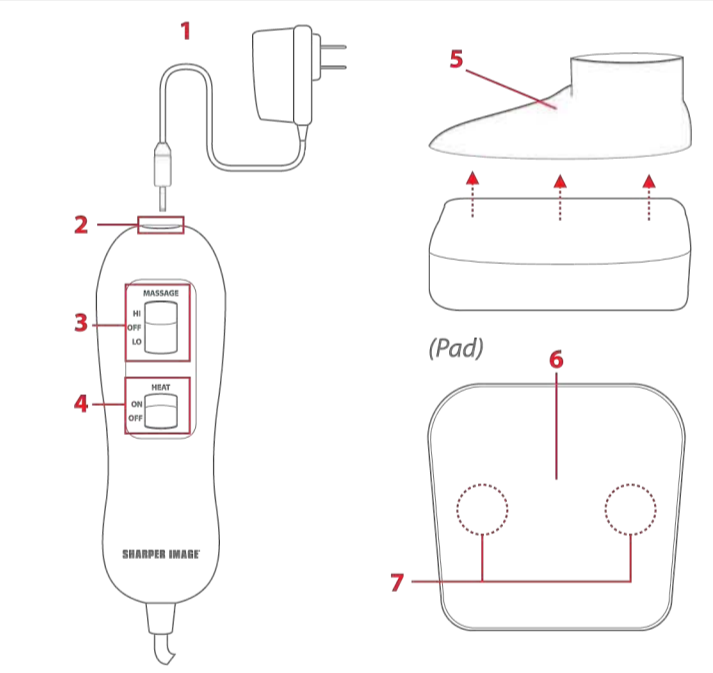
FCC Information Location of Controls

Caution: Any changes or modifications not expressly approved could void the user's authority to operate the equipment.

This device complies with Part 15 of the FCC Rules. Operation is subject to the following two conditions:
 (1) This device must not cause harmful interference, and
 (2) This device may accept any interference received, including interference that may cause undesired operation.

Note: This equipment has been tested and found to comply with the limits for a Class B digital device, pursuant to part 15 of the FCC Rules. These limits are designed to provide reasonable protection against harmful interference in a residential installation. This equipment generates, uses and can radiate radio frequency energy and, if not installed and used in accordance with the instructions, may cause harmful interference to radio communications. However, there is no guarantee that interference will not occur in a particular installation. If this equipment does cause harmful interference to radio or television reception, which can be determined by turning the equipment off and on, the user is encouraged to try to correct the interference by one or more of the following measures:

- Reorient or relocate the receiving antenna.
- Increase the separation between the equipment and receiver.
- Connect the equipment into an outlet on a circuit different from that to which the receiver is connected.
- Consult the dealer or an experienced radio/TV technician for help.

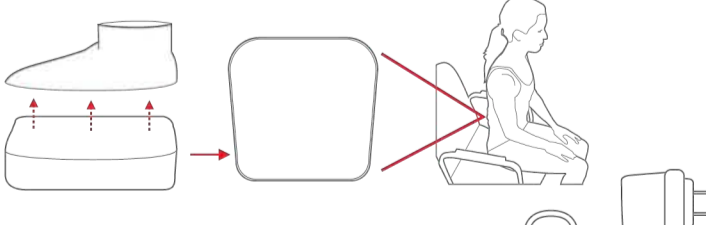


- (Accessories)**
 1. AC Adaptor
- (Controller)**
 2. AC Power Jack
 3. **Vibration** Setting
 4. **Heat** Setting

- (Pad)**
 5. Removable Foot Cover
 6. Heating Pad
 7. Massagers

Using the Massager Maintaining the Massager

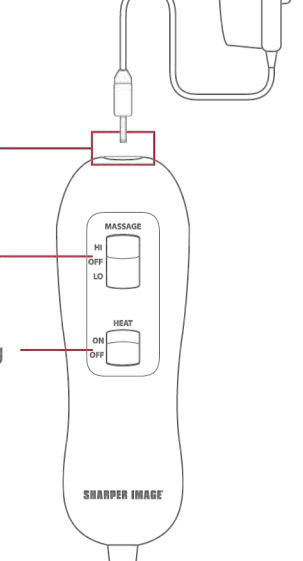
The massager can be used for feet or for the lower back. **To use the massager on your back, unzip and remove the foot cover from the pad.** The massager will fit comfortably in the small of your back:



Powering ON/OFF
 Attach the AC adaptor to the power jack on the top of the controller and plug the adaptor into a wall outlet.

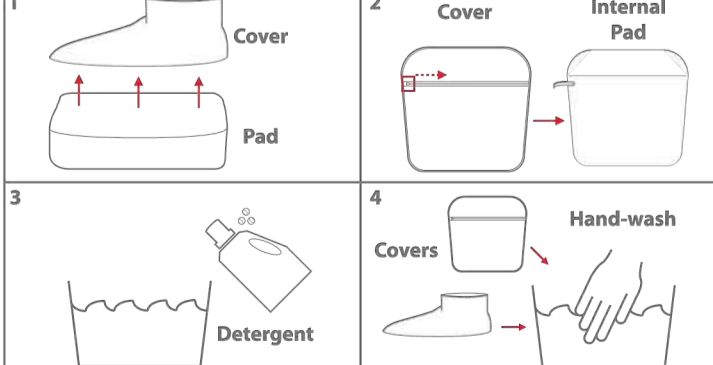
Turn the massager ON by moving the Vibration setting to the "Hi" or "Lo" position on the controller.

Turn the heating pad ON by moving the Heat setting to the "ON" position on the controller.



Storing the Massager
 The massager should be stored in a dry, cool location, away from sources of water or heat. It is best stored in a secure box or in an airtight bag to keep it free of dust.

Cleaning the Massager
 Unplug the massager and let the heating pad cool down if just used. Unzip and remove the foot cover from the massager, then unzip and remove the bottom cover from the pad.



Wash the massager's cover by hand with a small amount of detergent. Once washed, let the covers **air dry**.

DO NOT USE A WASHING MACHINE OR CLOTHES DRYER ON THE MASSAGER'S COVERS. This can shrink or damage the covers. Make sure the covers are completely dry before returning to the pad.

The massager's internal **pad CANNOT BE WASHED.** Washing the pad will cause damage to the massager's pad and can potentially cause bodily harm to the user.

- Do NOT allow any liquid or cleaning solutions to come into direct contact with the massager's pad.
- Do NOT immerse massager's pad in water.
- Do NOT use any abrasive cleaners or chemicals on the massager's pad or covers.
- Do NOT attempt to repair any damage to the massager's pad.