

2.4GHZ WIRELESS HEADPHONES

HRF 574

WHAT'S INCLUDED:

- HRF 574 Headphones
- Transmitter
- AC/DC adapter
- 3.5mm audio cable
- 3.5mm-to-RCA Y-cable
- Instruction manual

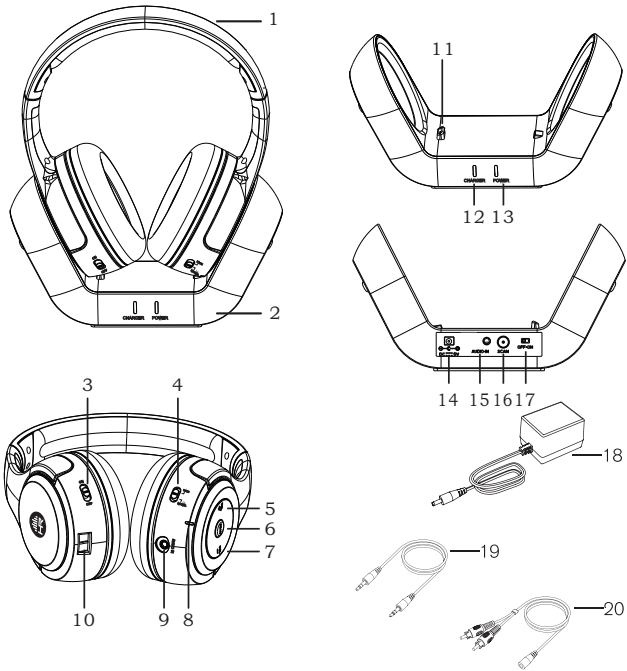
IDENTIFYING THE PARTS OF YOUR HEADPHONES

HEADPHONES

1. Headphones
2. Transmitter
3. Power ON/OFF Switch
4. Bass/Normal Switch (RF mode)
5. Volume Up Button
6. Scan Button
7. Volume Down Button
8. Power/RF Reception LED
9. AUX-IN Port
10. Charging Contacts

TRANSMITTER

11. Charging Contacts/Pins
12. Charge LED
13. Power LED
14. DC-In Port
15. Audio-In Port
16. SCAN Button
17. Power ON/OFF Switch
18. AC/DC Adapter
19. 3.5mm Audio Cable
20. 3.5mm (female)-to-RCA (male) Y-cable



INTRODUCTION

Thank you for purchasing the HeadRush HRF 574 headphones. In order to maximize your listening experience, please read the instructions below.

CHARGING

- For first time use, charge the headphones for 12 hours
- To charge the headphones, ensure the headphones are powered OFF by sliding the Power ON/OFF Switch to OFF. The Power/RF Reception LED will be OFF. Place the headphones on the top of the transmitter ensuring the charging contacts are aligned. The transmitter's charge LED will blink blue to show the headphones are charging. When the headphones are fully charged, the Charge LED will turn solid blue

TRANSMITTER SET UP

- Plug the AC/DC adapter into the DC-In Port located on the rear of the transmitter. Plug the other end of the AC/DC adapter into an electrical wall outlet
 - Slide the Power ON/OFF Switch to ON. The transmitter's power LED is solid red
 - Connect the transmitter to an audio source using the included RCA and audio cables
- NOTE:** If charge LED disappears, please check if the charging contacts of both the headphones and transmitter are well aligned.

USING THE HEADPHONES WITH TRANSMITTER

- To turn the headphones ON, slide the Power ON/OFF Switch to ON. The Power/RF Reception LED is solid red
 - The headphones will automatically sync to the transmitter. When the headphones are attempting to set up a connection with the transmitter, the Power/RF Reception LED will blink red. When the headphones and transmitter are synced, the headphones LED will turn solid blue
 - Use the volume buttons on the headphones and the audio source to increase or decrease the volume
 - Slide the Bass/Normal Switch to bass for bass boost function under wireless mode
- NOTE:** There is no bass boost function under wired connection.
- After 5 minutes of no audio signal detected, the Power/RF Reception LED turns solid red
 - To turn the headphones OFF, slide the Power ON/OFF switch to OFF. The Power/RF Reception LED will turn OFF

USING THE HEADPHONES WITH WIRED CONNECTION

- Connect the headphones directly to an audio source by plugging one end of the 3.5mm-to-3.5mm cable (included) into the Audio-Port at the bottom of the headphones and other end into the audio source
- Use the volume controls on the audio source to change the volume

USING YOUR HEADPHONES

1. For the best sound and comfort, the right fit is very important. Please adjust your headband to make sure the headphones fit snugly and securely.
2. Place your headphones on corresponding ear side (R on right ear and L on left ear).

TROUBLESHOOTING

No Sound

- Ensure the AC/DC adapter is securely plugged into the transmitter
- Ensure the headphones are powered ON
- Ensure the headphones and the transmitter are synced
- The headphones may need to be charged
- The headphones may need to move closer to the transmitter
- Ensure the audio device is switched ON
- The volume of the audio device may need to be increased
- If there is interference or poor signal reception, audio from the headphones will mute and the Power/RF Reception LED is solid red. Press the Scan buttons on transmitter and on headphones at the same time for 10 seconds until the headphones LED turn solid blue again

CARE AND STORAGE

- Dust the headphones and transmitter with a soft, dry cloth
- Store the headphones and transmitter in a cool, dry place

SPECIFICATIONS

Power supply (Transmitter):	DC 5V, 500mAh
Power supply (Headphones):	3.7V, 900mAh
Frequency:	2.4-2.48 GHz Digital
Transmission mode:	GFSK
Wireless range:	Up to 50m (164 ft.)
S/N Ratio:	75dB
Frequency response:	30Hz-20kHz
Charging time:	Approx. 4 hours
Battery life:	Approx. 12 hours

WARNING FOR THE LITHIUM-ION BATTERY

This device contains a non-removable Lithium-Ion battery. The battery must be recycled or disposed of properly. Contact your local waste management office for information on battery recycling or disposal.

THE FCC WANTS YOU TO KNOW

This equipment has been tested and found to comply with the limits for a

Class B digital device, pursuant to Part 15 of the FCC Rules. These limits are designed to provide reasonable protection against harmful interference in a residential installation.

This equipment generates, uses and can radiate radio frequency energy and, if not installed and used in accordance with the instructions, may cause harmful interference to radio communications. However, there is no guarantee that interference will not occur in a particular installation.

If this equipment does cause harmful interference to radio or television reception, which can be determined by turning the equipment off and on, the user is encouraged to try to correct the interference by one or more of the following measures:

- Reorient or relocate the receiving antenna
- Increase the separation between the equipment and receiver
- Connect the equipment into an outlet on a circuit different from that to which the receiver is connected
- Consult the dealer or an experienced radio/TV technician for additional suggestions

Any changes or modifications not expressly approved by the party responsible for compliance could void the user's authority to operate the equipment. Where shielded interface cables have been provided with the product or specified additional components or accessories elsewhere defined to be used with the installation of the product, they must be used in order to ensure compliance with FCC regulation.

FCC ID: 2AJ26-8057274

INDUSTRY CANADA NOTICE RSS210

This device complies with Industry Canada license-exempt RSS standard(s). Operation is subject to the following two conditions:
(1) this device may not cause interference, and
(2) this device must accept any interference, including interference that may cause undesired operation of the device.

This digital apparatus does not exceed the Class B limits for radio noise emissions from digital apparatus set out in the Radio Interference Regulations of Industry Canada.

IC NUMBER: 255A-8057274