

## OWNER'S MANUAL —

## XG-864 MECHANICAL KEYBOARD

Before installing and using the product, please read the instructions thoroughly and retain them for future reference.

8048064



### FEATURES:

- Single colour LED backlight with 6 backlighting modes (including Breathing and Wave)
- 6 levels of LED brightness bring a full spectrum of colour into your game
- 3 gaming profiles
- 104 programmable keys all with macro function
- Mechanical switch with 50 million rated keystroke lifespan
- Double shot injection keycaps
- 104 anti-ghosting keys
- Plug and play—USB interface, no driver or software required for keyboard use
- Supported systems: Windows XP, 7/8/10/10.1

\*Some functions require software installation (CD included)

### XG M864 SET UP:

1. Install: Plug and play for keyboard use. Please install the enclosed CD software for advanced features and settings.
2. Keyboard interface: USB 2.0
3. Supports six different modes of backlight effects. Mode 3 (below) is the default setting.

#### Mode 1 - Flow

- Press FN+INS. This mode incorporates three different kinds of backlights including:
  - a) The lighting will scan from the first key to the end. When the lighting touches the last row, the whole row will light up. The cycle is repeated until the whole keyboard is lite up (row by row).
  - b) The LED backlit will gather quickly to the keyboard center and start breathing.
  - c) The LED lights will twinkle in the centre then spread to the surrounding keys. The lights will come together and then briefly turn off (before repeating the entire cycle). The above three LED backlit mode will cycle automatically.

#### Mode 2 Splash

- Press FN+HOME: All backlight LED lights will turn off. When a key is touched, the LED backlights reveal a ripple effect.

#### Mode 3 Wave (Default Setting)

- Press FN+PGUP: The LED backlights slowly come on and off, (like a wave from one side to the other side).

#### Mode 4 Breathing


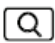






- Press FN+DEL: The keyboard backlights slowly come on and increase brightness; then fade and decrease brightness.


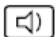


#### Mode 5 Custom

- Press FN+END: When entering into this mode, the default will be as the last settling. Press FN+End again. The 3 indicators "1"A" ↓" will flash. The user can choose to turn ON/OFF the backlit by software or by clicking the single keys. Press FN+End once again to save the customized mode.

#### Mode 6 Reaction

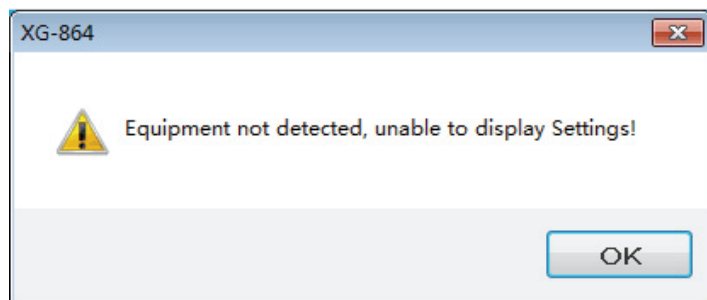
- Press FN+PGDN: This will Default as lights off. A Single key will light up if pressed (and then the light will fade). Press FN+PGDN again, a few keys surrounding the pressed key will light up briefly (and then fade)
4. WIN lock function: press FN+WIN to lock WIN & APP functions, repeat to unlock.
  5. To adjust the backlight brightness: press FN+↑ to increase or FN+↓ to decrease the LED brightness. There are six different brightness levels.
  6. Adjust the breathing/running mode: press FN+← or FN+→ to adjust the LED breathing/running speed.
  7. Press FN+PRTSC to restore the factory default setting.
  8. Multimedia functions (FN+F1~F12).

FN + F1		Open my computer
FN + F2		Search
FN + F3		Calculator
FN + F4		Multimedia player
FN + F5		Previous
FN + F6		Next
FN + F7		Play/Pause
FN + F8		Stop

- FN + F9  Mute
- FN + F10  V-
- FN + F11  V+
- FN + F12  Lock keyboard (repeat to unlock)

### CD DRIVER INSTALLATION:

1. Double click the XG-864 .exe file and follow all instructions to complete the installation. Make sure to use the correct driver which matching with keyboard. Otherwise a warning message will be pop-up as below:



2. When the keyboard detected matches with the driver, the taskbar will change colour as below:
3. Double click the taskbar icon to open the driver, the main interface will appear as below:



**CD software introduction:** Includes; macro editing, LED backlight effects, keyboard graphical interface and other operation buttons.

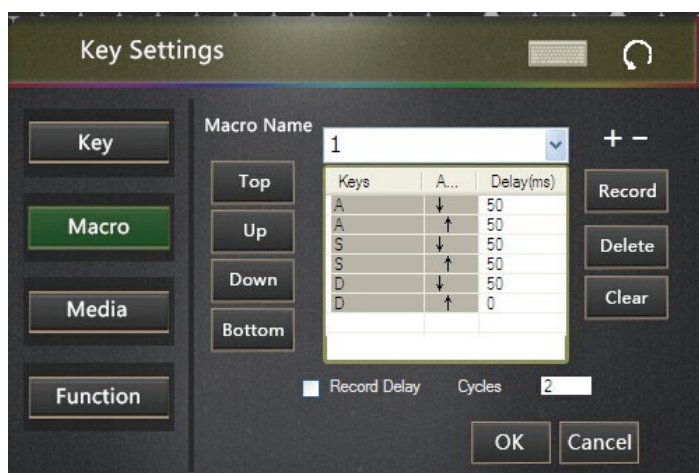
### Macro setting:

- Click "+" add a macro, Click "-" remove a macro.
- Click "Record" to start inputting characters.
- A setting can be assigned to an individual key for example: "Q" key can be set as "AASSDDL" with the macro name "ET".
- Click "delete/clear" key to remove one single key or the whole group of keys under "ET".
- Select "Record delay" to record the press key time and release time. "Recycle times" means select the macro player times.



**Key settings Include:** Single key, Macro key, Multimedia key, Function key.

All keys can be edited. The LED edit can be restored to the default status through "restore default", click "Apply" to complete, then click "OK" to save the current setting and the user interface (UI) will be minimized to taskbar.



**Single key setting:** To set the normal key function as needed. (For example: "Q" key can be set as F6)



**Macro key setting:** (Macro setting as mentioned above)

Click "+" to add a macro, Click "-" remove a macro,

Click "Record" to start inputting characters,

Add characters on one key (for example: "A" key set as "AABBCC", macro name 'Macro2').

Click "delete/clear" key to remove one single key or the whole group of keys under "ET".

Select "Record delay" to record the press key time and release time.

"Recycle times" means select the macro player times.



Each profile contains a minimum of 5 macros. There 3 profiles in total. You can name your macros. The maximum bytes for all the macro recording content is 1000 bytes.

**Multi-media:** Set multi-media function on one single key. For example set "Favorite" on Q.



**Function key:** Set the function key to a single key. For example set "Copy" to "Q" key



**Lighting mode:** Select the lighting effect by the driver software. There are 6 modes available (as introduced above): Flow, Splash, Wave, Breathing, Reaction, Custom



**Menu key introduction:** Import, Export, About, Close.



**Import/export:** Choose to Import/Export the profiles.

**About:** Software information.

## THE FCC WANTS YOU TO KNOW

This equipment has been tested and found to comply with the limits for a Class B digital device, pursuant to Part 15 of the FCC Rules. These limits are designed to provide reasonable protection against harmful interference in a residential installation.

This equipment generates, uses and can radiate radio frequency energy and, if not installed and used in accordance with the instructions, may cause harmful interference to radio communications. However, there is no guarantee that interference will not occur in a particular installation.

If this equipment does cause harmful interference to radio or television reception, which can be determined by turning the equipment off and on, the user is encouraged to try to correct the interference by one or more of the following measures:

- Reorient or relocate the receiving antenna
- Increase the separation between the equipment and receiver
- Connect the equipment into an outlet on a circuit different from that to which the receiver is connected
- Consult the dealer or an experienced radio/TV technician for additional suggestions

Any changes or modifications not expressly approved by the party responsible for compliance could void the user's authority to operate the equipment. Where shielded interface cables have been provided with the product or specified additional components or accessories elsewhere defined to be used with the installation of the product, they must be used in order to ensure compliance with FCC regulation.

## CAN ICES-3(B)

## THE SOURCE - WARRANTY



The Source warrants that this product will be free from defects in materials and workmanship for a period of twelve (12) months from the date of purchase. Within this period, simply take the product and your proof of purchase to any The Source store or participating dealer and the product will be replaced (where available) without charge. Any product which has been subject to misuse or accidental damage is excluded from this warranty.

This warranty is only applicable to a product purchased through The Source company-owned stores or participating dealers in Canada where the warranty is included with the product. While this warranty does not confer any legal rights other than those set out above, you may have additional statutory rights which will vary under the laws of the various countries, states, provinces and other governmental entities in which The Source operates. This warranty is subject to all statutory rights you may have in Canada.

Imported by The Source

Barrie, Ontario, Canada, L4M 4W5

Manufactured in China

For product support please visit [www.thesource.ca](http://www.thesource.ca)

© 2016 The Source  
All rights reserved.



Please Recycle