

WIRED GAMING HEADSET WITH VIRTUAL SURROUND SOUND

FEATURES

- Hear enemies approaching from all sides with 7.1 surround sound and powerful 40mm drivers
- Customizable audio effects and settings for realistic 3D-sound quality
- Vibrates and boosts the bass for a fully immersive gaming and entertainment experience
- Communicate clearly with your teammates to coordinate your winning strike with the omnidirectional flexible boom mic
- In-line controls for quick access to volume, mute and vibration activation
- Lights up while you level up, with colour-changing LEDs
- Lightweight with a self-adjusting headband for lasting comfort

DRIVER INSTALLATION

- Insert the CD and it will automatically install
- Enter the installation interface (as Fig. 1), click 'Next>'. Click 'Next' on Fig. 2 and Fig. 3

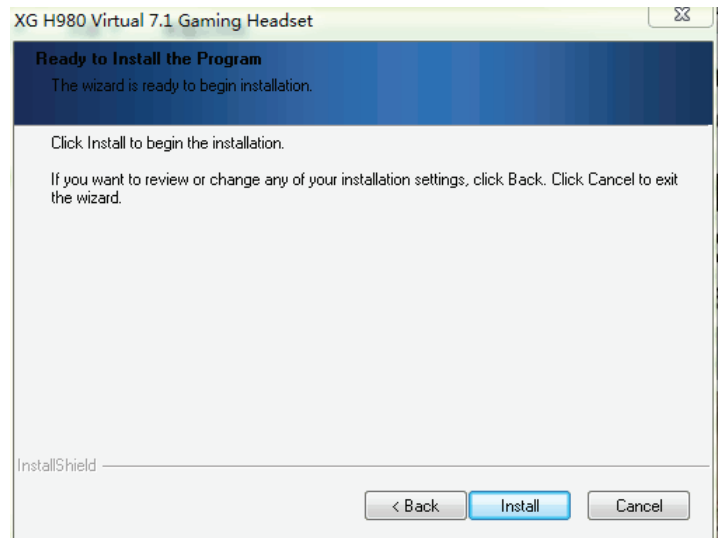


Fig. 3

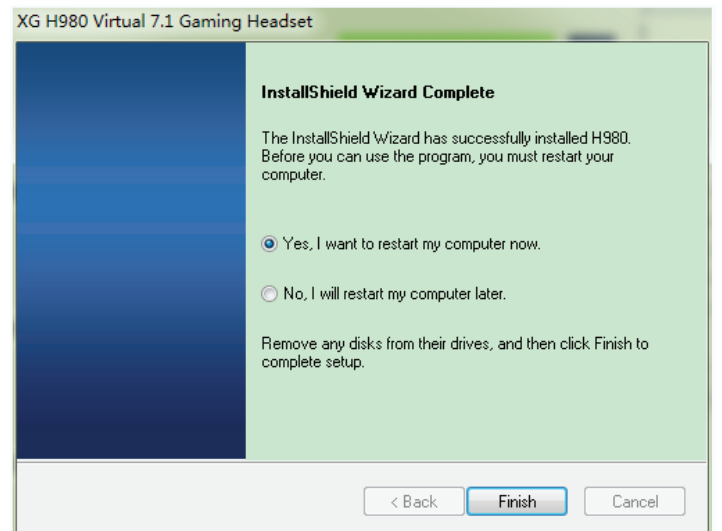


Fig. 4

The last file dialog will request to restart and update the computer. Click 'Yes' and 'Finish' to restart your computer. **Note:** Some anti-virus software will recognize this driver as a virus or a virus alert. The anti-virus software might also intercept the installation causing the installation to fail. To prevent this, temporarily close your anti-virus software before installation. Then reboot your system for automatic recovery of your anti-virus software.

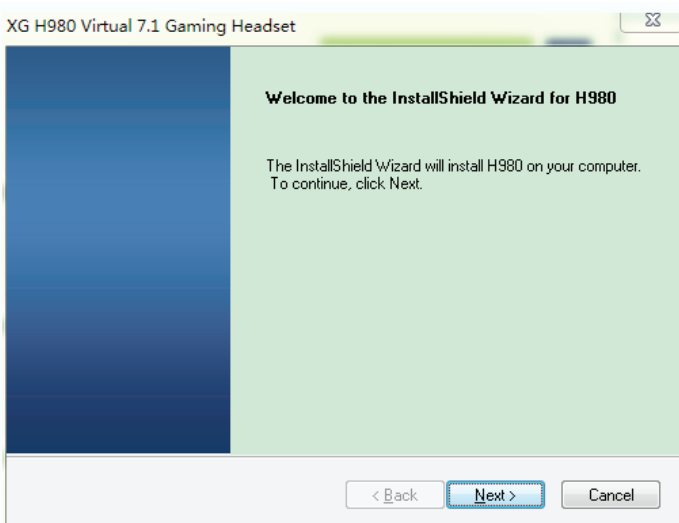


Fig. 1



Fig. 2.

CUSTOMIZABLE SETTINGS

Main settings

- Double click the XG icon (as shown on Fig. 5). Fig. 6 will pop-up

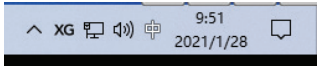


Fig. 5



Fig. 6

VOLUME CONTROL

- To adjust the volume (Master Volume, Left and Right sensitivity controls), select 'Volume Control' on Fig. 6. See Fig. 7 below



Fig. 7

SAMPLING FREQUENCY

- Shown in Fig. 8, select from two options: 44.1kHz or 48kHz



Fig. 8

SOUND EFFECT

- In Fig. 9, select the desired sound effect such as: Default, Dance, Bass or Rock



Fig. 9

- Shown as Fig. 10, select the audio sound simulation. There are up to 27 different sound effects and 3 different room sizes



Fig. 10

- Shown as Fig.11, select the active virtual 7.1 sound effect



Fig. 11

- Shown as Fig. 12, select the active tone control and the original sound alteration function



Fig. 12

- Shown as Fig. 13, activate the surround sound



Fig. 13

Microphone adjustment: double click or right-click to open the microphone MIC icon to select the corresponding menu.

VOLUME CONTROL

- Shown as Fig.14, you can choose to adjust volume (Mic Volume and Monitor), unlock the left and right channel sensitivity



Fig. 14

SAMPLING FREQUENCY

- Shown as Fig. 15, select from two options for microphone frequency: 44.1KHz or 48KHz

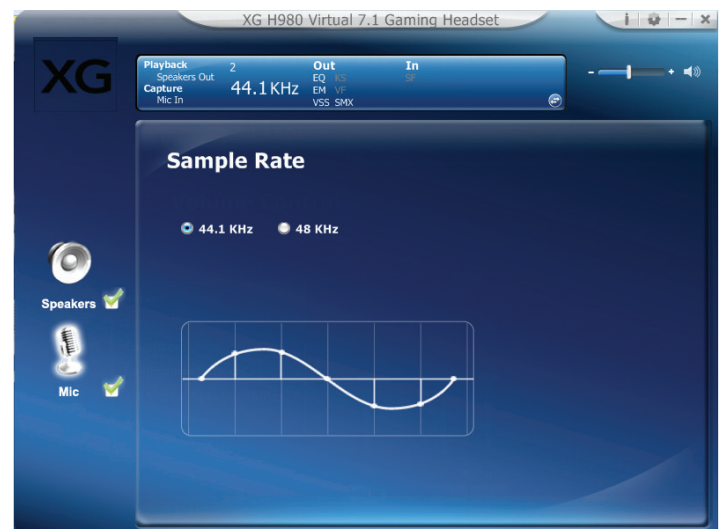


Fig. 15

- Shown as Fig.16, select from 4 kinds of voice effects: monster, cartoon, man or woman



Fig. 16

MICROPHONE UPGRADE

- Shown as Fig.17, activate Microphone Boost effect to upgrade the voice volume



Fig. 17

- Shown as Fig.18, select to customize 4 options of sound effects and play high fidelity, movies, music or custom mode



Fig. 18

OS VERSION INFORMATION

- Show as Fig. 19, the driver information is shown in the Win7/8/8.1/10/11 OS



Fig. 19

APPLICATION SETTINGS

- Shown as Fig. 20, select from the language and transparent effect options available

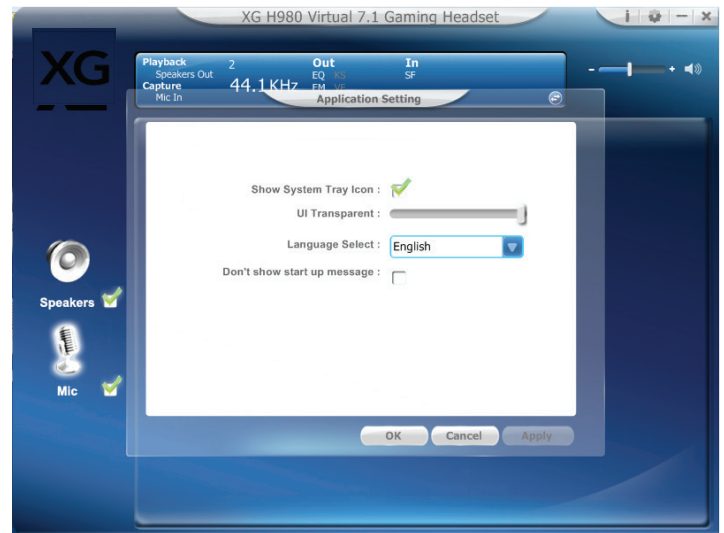


Fig. 20

WIRE CONTROLLER INTRODUCTION

- The in-line controller is shown as Fig. 21. To operate the 'vibration' function, press the VIBRATE button to activate. To activate the mute function of the microphone, press the MUTE MICROPHONE button. Adjust the volume by turning the volume wheel up or down

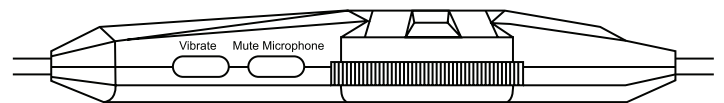


Fig. 21

WARNING: Turn down the volume on the H980 to the lowest level. Place the headset on your head and adjust the headband until the headset fits comfortably. Adjust the microphone to fit properly. Slowly raise the volume to a comfortable level. High levels of noise can damage your ear drums and increase the risk of hearing loss.

SPECIFICATIONS

Microphone	Mic Dimensions	6.0 x 2.8 mm
	Sensitivity	-46±3dB (at 1kHz)
	Directivity	Omnidirectional
	Impedance	≤2.2kΩ
Speaker	Driver Diameter	40mm
	Sensitivity (S.P.L)	105±3dB (at 1kHz)
	Impedance	32Ω
	Frequency Response	20Hz-20kHz
Cord Length		≥2.0meters
Plug		USB
Net Weight		≈405g

IMPORTANT SAFETY PRECAUTIONS

- Do not listen at a high volume level. Extended high volume levels can lead to permanent hearing loss
- Start with setting the volume level at the lowest volume and adjust until you reach a comfortable volume level
- Do not use while sleeping
- If you experience any ringing in your ears, try lowering the volume. If the ringing persists, visit your physician
- Tampering with the product can result in damage to your product, void of warranty, and could cause injuries

CAN ICES-3(B)/NMB-3(B)



THE SOURCE - WARRANTY

The Source warrants that this product will be free from defects in materials and workmanship for a period of twelve (12) months from the date of purchase. Within this period, simply take the product and your proof of purchase to any The Source store or participating dealer and the product will be replaced (where available) without charge. Any product which has been subject to misuse or accidental damage is excluded from this warranty.

This warranty is only applicable to a product purchased through The Source company-owned stores or participating dealers in Canada where the warranty is included with the product. While this warranty does not confer any legal rights other than those set out above, you may have additional statutory rights which will vary under the laws of the various countries, states, provinces and other governmental entities in which The Source operates. This warranty is subject to all statutory rights you may have in Canada.

Imported by:
The Source, Barrie, Ontario, Canada, L4M 4W5
Manufactured in China
www.thesource.ca
© 2022 The Source. All rights reserved.

