

OWNER'S MANUAL —

Before installing and using the product, please read the instructions thoroughly and retain them for future reference.

8042955/6

PACKAGE CONTENTS

- Wireless mouse x1
- Nano USB receiver x1
- Infinicell AAA batteries x2
- Instruction manual x1

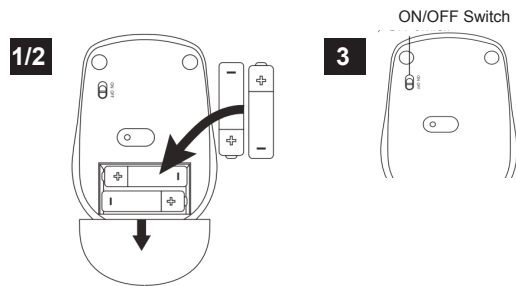
MOUSE DESCRIPTION



INSTALLING BATTERIES

To properly install batteries into your mouse, please follow the instructions below:

1. Open the battery compartment cover.
2. Install 2 AAA (included) batteries into your mouse following the battery orientation guide in the battery bay and then close the battery compartment cover on your mouse.
3. Turn ON the switch on the bottom of the mouse. Your mouse is now ready to use.



INSTALLATION FOR ALL OPERATING SYSTEMS

1. Make sure you have successfully installed the batteries into your mouse (refer to the installing batteries section in this manual if necessary).
2. Turn on your computer, plug the enclosed Nano Receiver into an available USB port on your computer.
3. Your mouse will connect to the receiver automatically.

CHANGING THE SPEED OF YOUR MOUSE

To change the speed of the cursor or the scroll button features on your computer, please follow the instructions below:

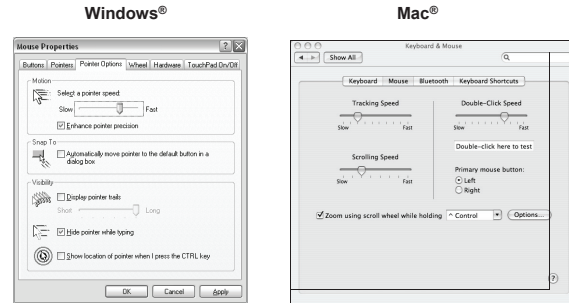
NOTE: The screenshots shown below are for demonstration purposes only and your screen may look slightly different but have similar options.

For Windows®

Open the **"Control Panel"** and double click the **"mouse"** icon to open the mouse properties screen, then select the **"Pointer Options"**. After you have made your changes select **"Apply"** and then **"OK"**.

For Mac®

Open **"System Preferences"** and click the **"Keyboard & Mouse"** icon, then select the **"Mouse"** tab and make your changes.



SYSTEM REQUIREMENTS

Please be sure that you meet all of the system requirements below to avoid difficulties during installation.
 Compatible with PCs, Mac® computers and Chromebook™ notebook computers with the following operating systems:
 Windows® 98/2000/XP/Vista/7/8/10, Mac OS X® 10.5.
 Requires an available USB port.
 Requires 2 x AAA batteries (included).
 Frequency: 2.4GHz
 Distance: 10m (32 ft.)
 4 DPI options: 800/1200/1600/2400

INDUSTRY CANADA NOTICE

This device complies with RSS-210 of Industry Canada. Operation is subject to the following two conditions:

- (1) this device may not cause interference, and
- (2) this device must accept any interference, including interference that may cause undesired operation of the device.

This digital apparatus does not exceed the Class B limits for radio noise emissions from digital apparatus set out in the Radio Interference Regulations of Industry Canada.

IC Number: 255A-8042955/6

THE SOURCE - WARRANTY

The Source warrants that this product will be free from defects in materials and workmanship for a period of twelve (12) months from the date of purchase. Within this period, simply take the product and your proof of purchase to any The Source store or participating dealer and the product will be replaced (where available) without charge. Any product which has been subject to misuse or accidental damage is excluded from this warranty.

This warranty is only applicable to a product purchased through The Source company-owned stores or participating dealers in Canada where the warranty is included with the product. While this warranty does not confer any legal rights other than those set out above, you may have additional statutory rights which will vary under the laws of the various countries, states, provinces and other governmental entities in which The Source operates. This warranty is subject to all statutory rights you may have in Canada.

Imported by The Source
 Barrie, Ontario, Canada, L4M 4W5
 Manufactured in China
 For product support please visit www.thesource.ca
 © 2015 The Source All rights reserved.

