

F L U I D TM MC

8008964B

7-inch Digital Picture Frame



Instruction Manual

Read all of the instructions before using this device and keep the manual in a safe place for future reference.

Important Safety Instructions

Read all instructions before use and keep for future reference

- When left unused for a long period of time, the unit should be unplugged from the wall outlet.
- This product is designed for use in moderate climate. Do not use or install this unit where it would be exposed to direct sunlight, extreme hot temperatures, or near a radiator, stove or appliance that produces heat.
- Do not take this unit to the bathroom, or near a swimming pool. Do not use where it would be exposed to water, moisture, dripping or splashing.
- Do not place near naked flame sources, such as lighted candles on the product.
- If water gets inside the unit, unplug the power cord from the power socket and consult your dealer.
- Do not handle the power cord with wet hands. To avoid electric shock, NEVER touch any internal parts. Repairs/servicing should be left to qualified service personnel.
- When connecting or disconnecting from the power supply, hold the plug but not the cord. Pulling the cord may damage it and is dangerous.
- Do not drop the unit, spill liquid into it or allow objects to fall in it.
- When plugged in, a very small current will flow. To save electricity and for safety, it is recommended that the product is completely disconnected from the power socket if the unit will not be used for a period time.
- Consult your nearest dealer when damage, disconnection or contact failure is found with the cord.
- Do not bend the cord sharply, pull or twist it.
- Do not modify the power cord in any manner.
- Do not insert any metallic object into the unit.
- Unplug the power cord when there is the possibility of lightning.
- The power plug is used as the disconnection device. It shall remain readily operable and should not be obstructed during intended use.
- To completely disconnect the device from the power supply, the power plug of the device must be disconnected from the wall outlet completely.
- Ambient temperature should be 0~40°C. Do not store the unit in hot or cold areas.
- Connect the AC adapter to the DC 5V jack and to the wall outlet.
- Use only attachments/accessories specified by the manufacturer.
- In case of malfunction due to electrostatic damage, reset the product by reconnecting to the power source to resume normal operation.

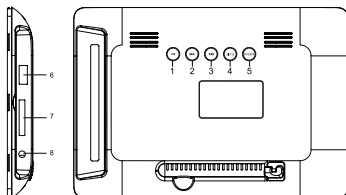
Warning: To reduce the risk of fire or electric shock, do not expose the unit to rain, moisture and water.

Contents

Important Safety Instructions	1
1. Production Introduction	3
1.1 Product Overview	3
1.2 What's in the Box	3
1.3 Power Adapter	4
2. Set-Up	5
2.1 Connecting to the Power Supply	5
2.2 Placing the Photo Frame	5
2.3 Power ON/OFF	5
3. Operation	6
3.1 Card and USB	6
3.2 Picture Mode	6
3.3 File	7
3.4 Calendar	7
3.5 Setup	7-8
3.6 Stand Instruction	8
4. Specifications/Troubleshooting	9
4.1 Technical Specifications	9
4.2 Troubleshooting Guide	9
Warranty	10

1. Product Introduction

1.1 Product Overview



1	ENTER PLAY/PAUSE	<ul style="list-style-type: none">• To confirm a setting or function• To start/pause the slideshow
2	NEXT RIGHT/DOWN	<ul style="list-style-type: none">• To display the next photo• To move right and down in the menu/ thumbnail/option settings
3	PREV LEFT/UP	<ul style="list-style-type: none">• To display the previous photo• To move left and up in the menu/ thumbnail/option settings
4	EXIT	<ul style="list-style-type: none">• To return to the main menu
5	MENU/SETUP POWER ON/OFF	<ul style="list-style-type: none">• To enter the setup menu• Press and hold to power ON/OFF
6	USB INPUT JACK	<ul style="list-style-type: none">• To accomodate USB devices such as portable USB flash drives or flash memory card readers
7	MEMORY CARD SLOT	<ul style="list-style-type: none">• To accomodate SD and MMC cards
8	POWER INPUT JACK	<ul style="list-style-type: none">• To connect to the main power adapter

1.2 What's in the Box:

AC Adapter
Picture Frame
Owner's Manual
USB Charging Cable

1. Product Introduction

1.3 Power Adapter



Insert the USB cable into the DC adapter

2. Set-Up

2.1 Connecting to Power Supply

Connect the supplied adapter (5V, 1.0A) to the DC IN jack, then plug the other end to a power outlet.



2.2 Placing the Photo Frame

Pull out the stand until the stand is in place. The photo frame can be placed vertically or horizontally for either landscape or portrait display.



2.3 Power ON/OFF

Press and hold the Menu/Setup button for 3 seconds to power the unit ON/OFF.



**MENU/SETUP
BUTTON**

Press for 3
seconds to power
ON/OFF the unit

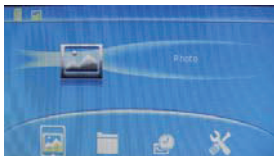
3. Operation

This picture frame supports SD/SDHC/MMC and USB 2.0 memory files. After inserting a card or USB device, a slideshow of the images will play automatically.

Press EXIT twice to access the Photo, File, Calendar and Setup menus. Press ENTER to confirm the item you want.

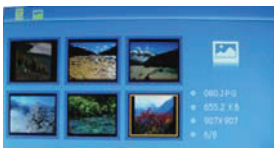
Note: 1. Make sure there are supported picture files in the card or USB device.

Note: 2. It will take a longer time to buffer the slideshow if the photo file's size is more than 2MB.



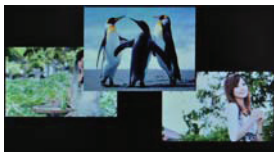
3.1 Card and USB

The memory card Selection menu will appear if you press EXIT. Select the device you wish to use.



3.2 Picture mode

Press EXIT to select "MEMORY CARD" in the main menu. Highlight "PHOTO", press ENTER to enter into the picture mode menu. Use ◀▶ to select the picture you want to display, press ENTER to play the picture in a single window.



Note: you can select the slide show (single window / three windows / four windows) in the SETUP operation.

3. Operation

3.3 File

Press EXIT to select “MEMORY CARD” or “USB” in the media menu. Select File, then press ENTER to access the file menu. You can preview all the files in the selected device by pressing ◀◀/▶▶.



3.4 Calendar

Choose “CALENDAR” from the main menu, press ENTER. The calendar is displayed and any photos on the connected memory are shown as a slideshow on the left side. Browse the date information using ◀◀/▶▶.



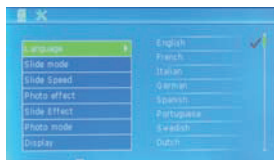
3.5 Setup

Choose “SETUP” from the main menu, then press ENTER. Use ◀◀/▶▶ to select the item you want to set up.

Options are:

Language, slide mode, slide speed, photo effect, slide effect, photo mode and display.

Press ▶▶ to show the sub menu, select with ◀◀/▶▶, then press ENTER to confirm.



-
- 3.5.1 **Language:** English, French, Italian, German, Spanish, Portuguese, Dutch
- 3.5.2 **Slide mode:** single window, three windows and four windows
- 3.5.3 **Slide speed:** 3/5/15/30 seconds, 1/5/15/30 minutes and 1hour:
Use ◀◀/▶▶ to select the speed, press ENTER to confirm, then press EXIT.
- 3.5.4 **Slide effect:** Random, Split Horizontal in, Split Horizontal out, Jalousie, Split Vertical in, Split Vertical out, Radiation, Surround, Fade, Right refresh, Next Refresh, On Pan, Roll from down to up, Roll from up to down, Brick.
- 3.5.5 **Photo effect:** Color, Mono, Sepia.
- 3.5.6 **Photo mode:** Auto Fit, Optimal, full.
- 3.5.7 **Display**
Contrast: Press ENTER twice to select. Use ◀◀/▶▶ to select from 00 (lowest) to 40(highest).
Brightness: Press ENTER to select. Use ◀◀/▶▶ to select from 00(lowest) to 40(highest).
Saturation/Tint: Press ENTER to select. Use ◀◀/▶▶ to select from 00(lowest) to 40(highest).
- 3.5.8 **Set time/date:** Press ENTER twice to select, then use ◀◀/▶▶ to set. Select "Save Time" to save the setting.
- 3.5.9 **Set Time format:** 12/24, Press◀◀/▶▶to set, use ENTER to confirm
- 3.5.10 **Format built-in memory:**
Press ENTER, use ◀◀/▶▶ to select or unselected to format the built-in memory.
- 3.5.11 **Reset setting:**
Press ENTER, use ◀◀/▶▶ to select or unselect to reset all settings to default values, press ENTER to confirm.
- 3.5.12 **Exit :** Press to EXIT.

3.6 Stand Instruction

Extend the bracket from the slot of the digital photo frame, rotate the bracket to choose standing horizontally or vertically until it is locked in place Refer to the illustration.



4. Specifications/Troubleshooting

4.1 Technical Specifications

- Adapter:
Input: AC 100-240V 50 / 60HZ 0.3A
Output: DC 5 V / 1 A
- Picture Format: JPEG
- Memory Cards: SD/SDHC/MMC
- USB connection: USB 2.0
- Screen Parameter:
Screen Size: 7 inch LED
Resolution: 1024 x 600
Contrast: 200-300:1
Aspect Ratio: 16:9
Viewing Angle: 60°(left/right/vertical), 40°(horizontal)
Working Temperature: 0°-40°, Humidity: 10-85%

4.2 Troubleshooting Guide

If you have problems with your player, please consult both this guide and manual. If you need further assistance, please contact Technical Support.

- No power:
Please check whether the plug is inserted correctly.
- Can not read the CARD or USB:
Please confirm whether there is storage in the card or USB device.
Empty devices cannot be read.
- This slide speed is not the same as the setting time:
Please check if the photo size is too big (the photo can be played normally if the photo size is within 2MB).
- Display too bright or too dark:
Please adjust the brightness or contrast in the setup menu.
- The color is light or no color:
Please adjust the color and contrast setup.

THE SOURCE – WARRANTY



The Source warrants that this product will be free from defects in materials and workmanship for a period of one (1) year from the date of purchase. Within this period, simply take the product and your proof of purchase to any The Source store or participating dealer and the product will be replaced (where available) without charge. Any product which has been subject to misuse or accidental damage is excluded from this warranty.

This warranty is only applicable to a product purchased through The Source company-owned stores or participating dealers in Canada where the warranty is included with the product. While this warranty does not confer any legal rights other than those set out above, you may have additional statutory rights which will vary under the laws of the various countries, states, provinces and other governmental entities in which The Source operates. This warranty is subject to all statutory rights you may have in Canada.

Imported by:
The Source,
Barrie, Ontario, Canada, L4M 4W5
Manufactured in China

For product support please visit
www.thesource.ca



Please Recycle

© 2016 The Source
All rights reserved.