

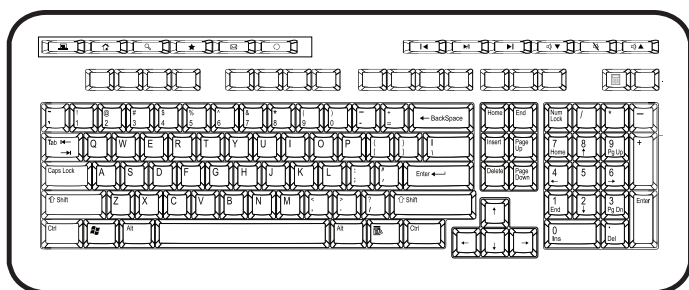
USER'S MANUAL

8007600B

Congratulations on your purchase of this USB wireless keyboard and mouse! This keyboard will finally free you of the constraints of your desktop by providing a wireless connection between your keyboard and mouse to your PC. In order to enjoy your keyboard and mouse's full potential we recommended you read this manual carefully prior to installation.

2.4GHZ WIRELESS KEYBOARD & MOUSE

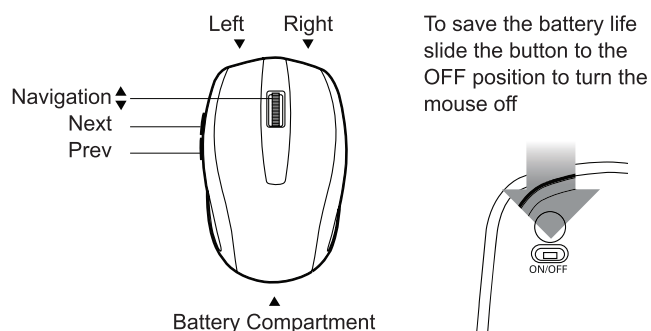
KEYBOARD FUNCTIONS



MULTIMEDIA KEYS

	My Computer		Play/Pause
	Home		Forward
	Search		Volume Down
	My Favourite		Mute
	Mailbox (default)		Volume Up
	Refresh		Calculator
	Backward		Windows Media Player

MOUSE FUNCTIONS



INSTALLING BATTERIES IN KEYBOARD

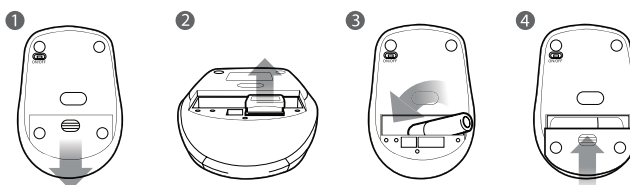


Open the battery compartment of the keyboard.

Put 2 AAA batteries (included) into the compartment and make sure the polarities are right.

Close battery compartment carefully.

INSTALLING BATTERIES IN MOUSE



1. Open the battery compartment of the mouse.
2. Remove the USB dongle.
3. Put 2 AAA batteries into the compartment and make sure the polarities are right.
4. Close battery compartment carefully.

PREPARING KEYBOARD AND MOUSE FOR USE



RECEIVER CONNECTION

The keyboard uses digital radio technology to wirelessly communicate. They transmit radio frequency signals that are picked up by the receiver and sent to the computer. The USB receiver is connected to one of the computer's USB ports.

Caution: Turn the computer off before connecting the receiver to it, and remember that working on a metallic surface will reduce the RF performance.

LOW POWER INDICATION

When the power of the keyboard is low, the intelligent power indication light turns to RED and starts blinking.

NOTE ON HANDLING BATTERIES

- Keep batteries out of children's reach
- Replace old or weak batteries promptly

- Do not mix old and new batteries or use different types of battery
- Dispose of and recycle your old batteries in accordance with local regulations

OPERATING TIPS

IF THE KEYBOARD DOESN'T WORK AFTER INSTALLATION:

- Make sure you've correctly connected the receiver to the computer (i.e. properly plugged into one of the computers USB ports)
- Make sure the batteries are installed correctly, and the keyboard is turned on
- Make sure the distance between the keyboard and the receiver is no more than 8 metres

IF THE KEYBOARD DOESN'T ALLOW YOU TO TYPE ON THE SCREEN:

- Make sure the receiver isn't too far away
- Make sure there are no large metal devices in the proximity—such as microwaves, electric stoves, televisions and hair dryers—which may be interfering the receiver's radio reception
- Check the status of the batteries

SPECIFICATIONS

1200 DPI Optical Mouse
 2.4GHz frequency
 Up to 8m range
 14 one-touch multimedia keys
 Supports: Windows 2000, XP, ME, Vista, 7/8/8.1/10
 Requires 2 AAA batteries (included). We recommend InfiniCell batteries for maximum performance.
 Dimensions: 44.1 x 18.6 x 1.96 cm

DISCLAIMER

We made every effort to ensure that the information and procedure in this guide is accurate and complete, no liability will be accepted for any errors or omissions and we reserve the right to make any changes without further notices to any products herein.

THE FCC WANTS YOU TO KNOW

This equipment has been tested and found to comply with the limits for a Class B digital device, pursuant to Part 15 of the FCC Rules. These limits are designed to provide reasonable protection against harmful interference in a residential installation.

This equipment generates, uses and can radiate radio frequency energy and, if not installed and used in accordance with the instructions, may cause harmful interference to radio communications. However, there is no guarantee that interference will not occur in a particular installation.

If this equipment does cause harmful interference to radio or television reception, which can be determined by turning the equipment off and on, the user is encouraged to try to correct the interference by one or more of the following measures:

- Reorient or relocate the receiving antenna.
- Increase the separation between the equipment and receiver.
- Connect the equipment into an outlet on a circuit different from that to which the receiver is connected.
- Consult the dealer or an experienced radio/TV technician for additional suggestions.

Any changes or modifications not expressly approved by the party responsible for compliance could void the user's authority to operate the equipment. Where shielded interface cables have been provided with the product or specified additional components or accessories elsewhere defined to be used with the installation of the product, they must be used in order to ensure compliance with FCC regulation.

INDUSTRY CANADA NOTICE

This device complies with RSS-210 of Industry Canada. Operation is subject to the following two conditions:

- (1) this device may not cause interference, and
- (2) this device must accept any interference, including interference that may cause undesired operation of the device.

This digital apparatus does not exceed the Class B limits for radio noise emissions from digital apparatus set out in the Radio Interference Regulations of Industry Canada.

IC Number: Keyboard 255A-8007282B
 Mouse 255A-2605020C

THE SOURCE - WARRANTY



The Source warrants that this product will be free from defects in materials and workmanship for a period of twelve (12) months from the date of purchase. Within this period, simply take the product and your proof of purchase to any The Source store or participating dealer and the product will be replaced (where available) without charge. Any product which has been subject to misuse or accidental damage is excluded from this warranty.

This warranty is only applicable to a product purchased through The Source company-owned stores or participating dealers in Canada where the warranty is included with the product. While this warranty does not confer any legal rights other than those set out above, you may have additional statutory rights which will vary under the laws of the various countries, states, provinces and other governmental entities in which The Source operates. This warranty is subject to all statutory rights you may have in Canada.

Imported by The Source
 Barrie, Ontario, Canada, L4M 4W5
 Manufactured in China
 For product support please visit www.thesource.ca

© 2016 The Source
 All rights reserved.



Please Recycle